

## 1. MOOMBAKI WINES

Award-winning hand-crafted wines



Moombaki Wines is a small family-run vineyard dedicated to producing distinctive, hand-crafted wines using traditional and ecological methods. Meet the producers and be guided through a tasting of estate-grown wines including our highly-regarded Chardonnay, Shiraz, and Cabernet blend. Enjoy the beautiful environment where are grapes are grown. We also stock a select range of locally crafted wood and art products.

### Find us

341 Parker Rd, Kentdale  
Open daily, 11am–5pm  
08 9840 8006  
moombaki.com

## 2. BOW BRIDGE ROADHOUSE

Famous homemade hamburgers



The "BOW" also serves delicious home-made food and gourmet coffee using quality locally sourced produce. For an authentic "Aussie" experience, try our yummy sausage rolls and our famous "BOWBURGER". We sell live Marron by the kilo in season. Our liquor store stocks a great range of local South Coast wines.

### Find us

1707 Valley of the Giants Rd, Bow Bridge  
(Cnr Sth Coast Hwy & Valley of the Giants Rd)  
Mon–Sat 8am–6pm  
Sun 8.30am–6pm  
Closed Christmas Day  
08 9840 8062  
bowbridgeroadhouse.com.au

NOTE: If you require Marron it is a good idea to phone ahead to ensure availability. Marron season opens 12pm 8 Jan – 12pm 5 Feb (inclusive).

## 5. VALLEY OF THE GIANTS OLIVES & WINES



True 'clean, green produce'

Experience home-grown organic olives, cold pressed olive oil and boutique wines while enjoying the breathtaking view over the Walpole Wilderness National Park. We offer handpicked olives pickled and bottled on the farm, with rosemary, chilli or garlic from our garden and handcrafted Cabernet Sauvignon, Rose and Semillon Sauvignon Blanc wines.

### Find us

145 Vigus Rd, Tingle Dale (off from Valley of the Giants Rd)  
Sun–Fri 9am–5pm  
Sat 12pm–5pm  
08 9840 8258  
organicolivesandwines.com.au

Friendly dogs are welcome to have a run around and play with our Labrador "Bella".

## 6. VALLEY OF THE GIANTS TREE TOP WALK



International tourist attraction

Walk amongst some of the biggest timber giants on earth, Western Australia's majestic tingle trees. The Valley of the Giants Tree Top Walk is an internationally recognised nature-based tourism attraction, climbing 40 metres into the forest canopy and meandering through the treetops for 600 metres, the walk is designed to maximise views and minimise impact.

### Find us

Valley of the Giants Rd, Tingle Dale  
Open daily, 9am–5pm  
(Last ticket sale at 4.15pm)  
Closed Christmas Day  
08 9840 8263  
treetopwalk.com.au

## 3. PEACEFUL BAY FISH & CHIPS



Real fish, real fishermen, real story

Come to Peaceful Bay for a local food experience, where our line caught fish comes straight from our family's boat and the pristine waters of the South Coast. Our fish is caught, filleted and cooked by the family and offers unbeatable flavour and are the ultimate meal for those who love local food.

### Find us

Peaceful Bay Caravan Park,  
Peaceful Bay Rd,  
Peaceful Bay  
Open daily - please phone ahead for closing times  
Closed Christmas Day  
08 9840 8060  
peacefulbaywa.com.au

## 4. VALLEY OF THE GIANTS GALLERY



The home studio of Des Brennan

The Gallery is the studio of local artist D.J. Brennan and also exhibits the work of established and emerging artists and has an Elcho Island Indigenous Art Collection. Set against a rural backdrop, gardens overlook a large pond with areas to relax and enjoy a Devonshire Tea. Discover a unique art experience on the edge of the forest.

### Find us

1673 Valley of the Giants Rd, Bow Bridge  
Open daily, 10am–4pm  
08 9840 8343  
valleyofthegiantsgallery.com.au

## 7. TINGLES BAKEHOUSE



Awaken your senses

Tingles Bakehouse makes a perfect stop with its unique atmosphere, quality food and great coffee. The small bakehouse specialises in housemade cakes and gourmet pies. The delicate flavours of the Estonian honey cake have won over locals and tourists alike. If you're feeling savoury, try our smoked beef rib pie.

### Find us

6405 South Coast Hwy, Nornalup  
Open seasonally from Nov–May  
Wed–Mon 8am–3pm  
08 9840 1273  
tinglesbakehouse.com.au

Open seasonally from November to May.

## 8. THE NORNABAR



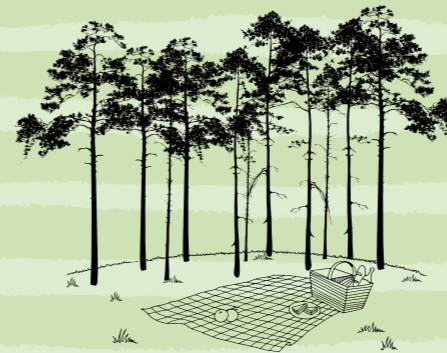
Modern bar and bistro

This elegantly restored historic house in Nornalup village serves modern bistro food and authentic Sri Lankan cuisine. Enjoy the relaxed, comfortable seating inside the refurbished building or outdoors on the front terrace. Our extended liquor licence means you can enjoy local and regional wines, craft beers, spirits and classic cocktails from the bar anytime.

### Find us

6684 South Coast Hwy, Nornalup  
Wed–Sun 10am–3pm for lunch & snacks  
Fri & Sat evenings for dinner from 6pm  
08 9840 1407  
nornabar.com

# Denmark WA A TASTE OF THE VALLEY OF THE GIANTS



## Welcome to Denmark WA and the Valley of the Giants

Immerse yourself in the natural environment of Denmark WA and the Walpole Wilderness.

Excite your senses as you experience cool climate wines and food amongst the ancient forest empire of the Valley of the Giants in the Amazing South Coast.

This trail takes you through the heart of Tingle and Karri forests where you will discover a vast array of local flora and fauna whilst enjoying conversations with small business owners as they share their locally grown wines, fresh produce and home cooked gourmet delights.

For information on local businesses you can search [www.denmarkchamber.com.au/business-directory](http://www.denmarkchamber.com.au/business-directory) or call the Chamber on 9848 2065.

## Ready to get started?

Here is how to start and finish your Taste of the Valley of the Giants Trail.

This tour will take you through the endemic forests of the South West edge including the Valley of the Giants Tree Top Walk. The world-famous Tree Top Walk is suspended 40 metres high in the canopy of the ancient tingle and karri forest. The red and yellow tingle trees are found nowhere else in Australia, or on Earth, and some have been standing for more than 400 years.

The hamlets of Walpole, Peaceful Bay, Bow Bridge and Nornalup can all be explored on this trail including some of the fantastic local food and wine producers. Take some time out to dive, surf, fish, canoe or walk amongst the flora and fauna along the Bibbulmun Track, beaches and coastal ridges, whilst enjoying the local produce.

1. Moombaki Wines
2. Bow Bridge Roadhouse
3. Peaceful Bay Fish and Chips
4. Valley of the Giants Gallery
5. Valley of the Giants Olives and Wines
6. Valley of the Giants Tree Top Walk
7. Tingles Bakehouse
8. The Nornabar

## Location of Denmark WA

Denmark WA is a coastal town located in the Great Southern region of Western Australia, 423 kilometres south of Perth. It is renowned for its food, wine and above all, its magnificent environment.

## About WA Food & Wine Trails

Western Australia is blessed with a huge range of memorable food and drink experiences. The WA Food and Wine Trails provide you with a sample of what is available across the state. Make sure you look out for them on your travels.



Visit the trails WA website at [trailswa.com.au](http://trailswa.com.au) and download the TrailsWA app from the App Store to find more trails to explore.

Produced with the support of  
Tourism WA



# A TASTE OF THE VALLEY OF THE GIANTS TRAIL MAP

Travel through the heart of the Tingle & Karri forests & discover an array of local produce and natural attractions.

## Getting around

Go to [denmarkchamber.com.au](http://denmarkchamber.com.au) to find a driver for your food or wine tour or self drive.

## Accommodation

### Tree Elle Retreat

Arrive to the smell of fresh baked bread in your home away from home at Tree-Elle Retreat. Be inspired by the acres of stunning gardens or entertained by the farm pets – kissing alpaca, chatting sheep, laughing turkeys, clucky chooks and honking geese. Enjoy a massage for the ultimate relaxation after wining and dining on the trail.

#### Find us

4993 South Coast Hwy, Bow Bridge  
08 9840 8471 (call us for the best rate)  
[tree-elle.com](http://tree-elle.com) | [info@treeelle.com](mailto:info@treeelle.com)

### Valley of the Giants Bed and Breakfast

Welcome to the farm. Take in sweeping valley views with happy cows at the doorstep. Located near the Tree Top Walk this is a unique farm stay experience. Offering luxury accommodation with king size bed and ensuite spa bath. 2 course breakfast included. Dinner menu uses seasonal local fresh fruit and vegetables, grass-fed beef and marron. Special diets catered for. Short term stay okay.

#### Special offer

Complimentary cocktail on arrival.

#### Find us

55 Vigus Rd, Tingledale (off Valley of the Giants Rd)  
Open at 2pm daily for check in  
08 9840 8002  
[facebook.com/pg/Valley-of-the-Giants-B-and-B-](https://www.facebook.com/pg/Valley-of-the-Giants-B-and-B-) | [ccreek@activ8.net.au](mailto:ccreek@activ8.net.au)

### Peaceful Bay Caravan Park

Experience caravanning and camping the way it was always meant to be. Grassed powered and un-powered sites, 200m from the swimming beach and boat launch.

#### Find us

East Ave, Peaceful Bay  
08 9840 8060  
[peacefulbaywa.com.au](http://peacefulbaywa.com.au) | [info@PeacefulBayWA.com.au](mailto:info@PeacefulBayWA.com.au)

## Share your experience

Instagram: [#DenmarkWA](https://www.instagram.com/DenmarkWA) [#theamazingsouthcoast](https://www.instagram.com/theamazingsouthcoast)  
[#ValleyoftheGiantsTreeTopWalk](https://www.instagram.com/ValleyoftheGiantsTreeTopWalk) [#Valleyofthegiants](https://www.instagram.com/Valleyofthegiants)  
[#DiscoverDenmark](https://www.instagram.com/DiscoverDenmark)

Facebook: [@DenmarkWAFood&WineTrails](https://www.facebook.com/DenmarkWAFood&WineTrails)  
[@Discoverdenmarkwa](https://www.facebook.com/Discoverdenmarkwa) [@theamazingsouthcoast](https://www.facebook.com/theamazingsouthcoast)

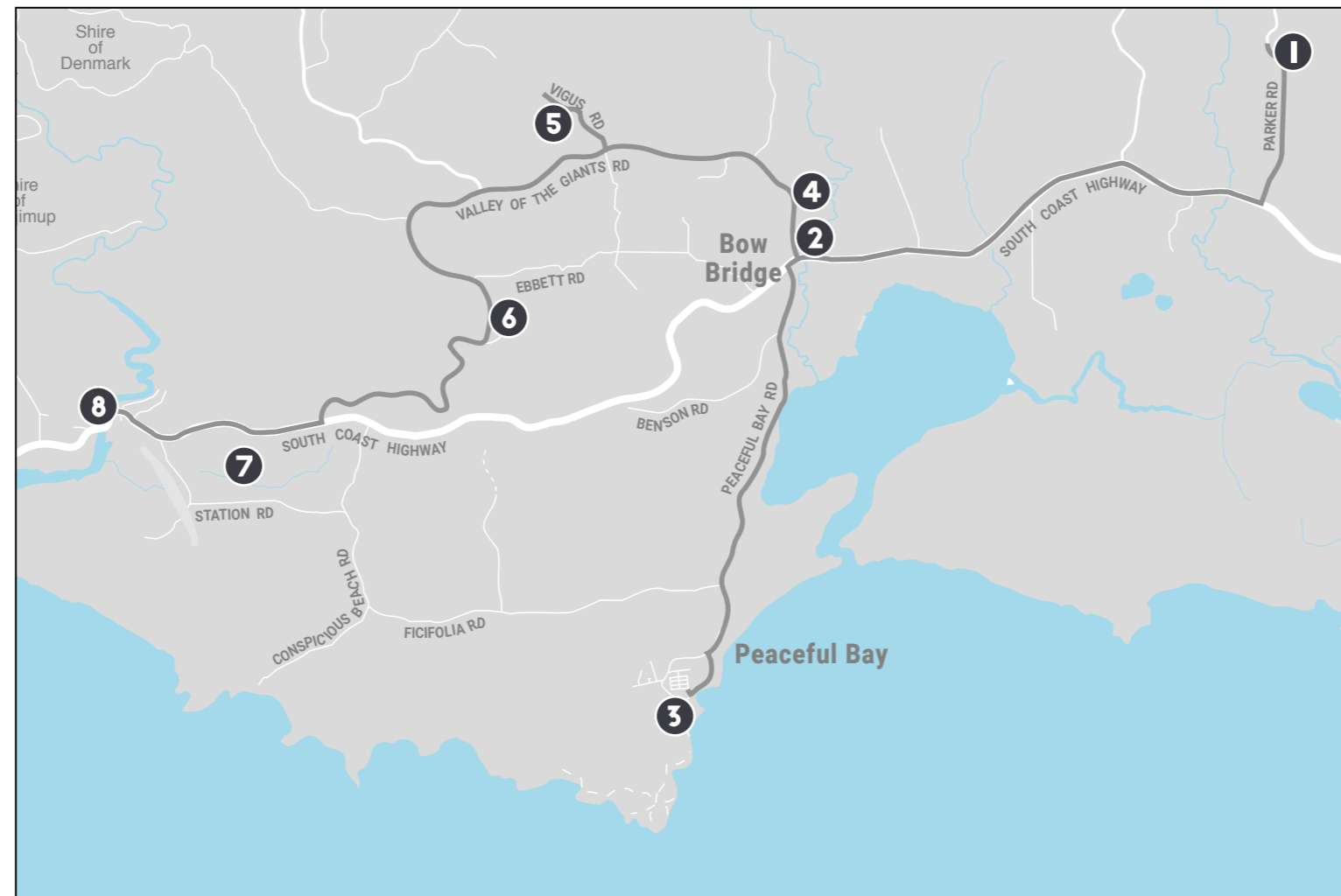
## More information

### Denmark Visitor Centre

73 South Coast Hwy, Denmark  
Open daily, Mon–Fri 9am–5pm (inc. public holidays)  
Sat 10am–3pm, Sun 10am–2pm  
Phone: 08 9848 2055  
Email: [bookings@denmark.com.au](mailto:bookings@denmark.com.au)

### Walpole Visitor Centre

Pioneer Park, South Coast Hwy, Walpole  
Open daily, Mon–Fri 9am–5pm, Sat–Sun 9am–4pm  
Phone: 08 9840 1111  
Email: [info@walpole.com.au](mailto:info@walpole.com.au)



### 1. MOOMBAKI WINES

341 Parker Rd, Kentdale  
Open daily, 11am–5pm  
08 9840 8006 | [moombaki.com](http://moombaki.com)

### 2. BOW BRIDGE ROADHOUSE

1707 Valley of the Giants Rd, Bow Bridge  
(Cnr Sth Coast Hwy & Valley of the Giants Rd)  
Mon–Sat, 8am–6pm, Sun 8.30am–6pm  
Closed Christmas Day  
08 9840 8062 | [bowbridgeroadhouse.com.au](http://bowbridgeroadhouse.com.au)

### 3. PEACEFUL BAY FISH & CHIPS

Peaceful Bay Caravan Park, Peaceful Bay Rd, Peaceful Bay  
Open daily - please phone ahead for closing times  
Closed Christmas Day  
08 9840 8060 | [peacefulbaywa.com.au](http://peacefulbaywa.com.au)

### 4. VALLEY OF THE GIANTS GALLERY

1673 Valley of the Giants Rd, Bow Bridge  
Open daily, 10am–4pm  
08 9840 8343 | [valleyofthegiantsgallery.com.au](http://valleyofthegiantsgallery.com.au)

### 5. VALLEY OF THE GIANTS OLIVES & WINES

145 Vigus Rd, Tingledale (off from Valley of the Giants Rd)  
Sun–Fri 9am–5pm, Sat 12pm–5pm  
08 9840 8258 | [organicolivesandwines.com.au](http://organicolivesandwines.com.au)

### 6. VALLEY OF THE GIANTS TREE TOP WALK

Valley of the Giants Rd, Tingledale  
Open daily, 9am–5pm (Last ticket sale at 4.15pm)  
Closed Christmas Day  
08 9840 8263 | [treetopwalk.com.au](http://treetopwalk.com.au)

### 7. TINGLES BAKEHOUSE

6405 South Coast Hwy, Nornalup  
Open seasonally from Nov–May  
Wed–Mon, 8am–3pm  
08 9840 1273 | [tinglesbakehouse.com.au](http://tinglesbakehouse.com.au)

### 8. NORNBAR

6684 South Coast Hwy Nornalup  
Wed–Sun 10am–3pm for lunch & snacks  
Fri & Sat evenings for dinner from 6pm  
08 9840 1407 | [nornabar.com](http://nornabar.com)

## KEY

- Winery
- Restaurant/Café
- Arts & Crafts
- Fuel
- Local Attraction
- Accommodation
- Shop
- Liquor
- A Taste of the Valley of the Giants trail